



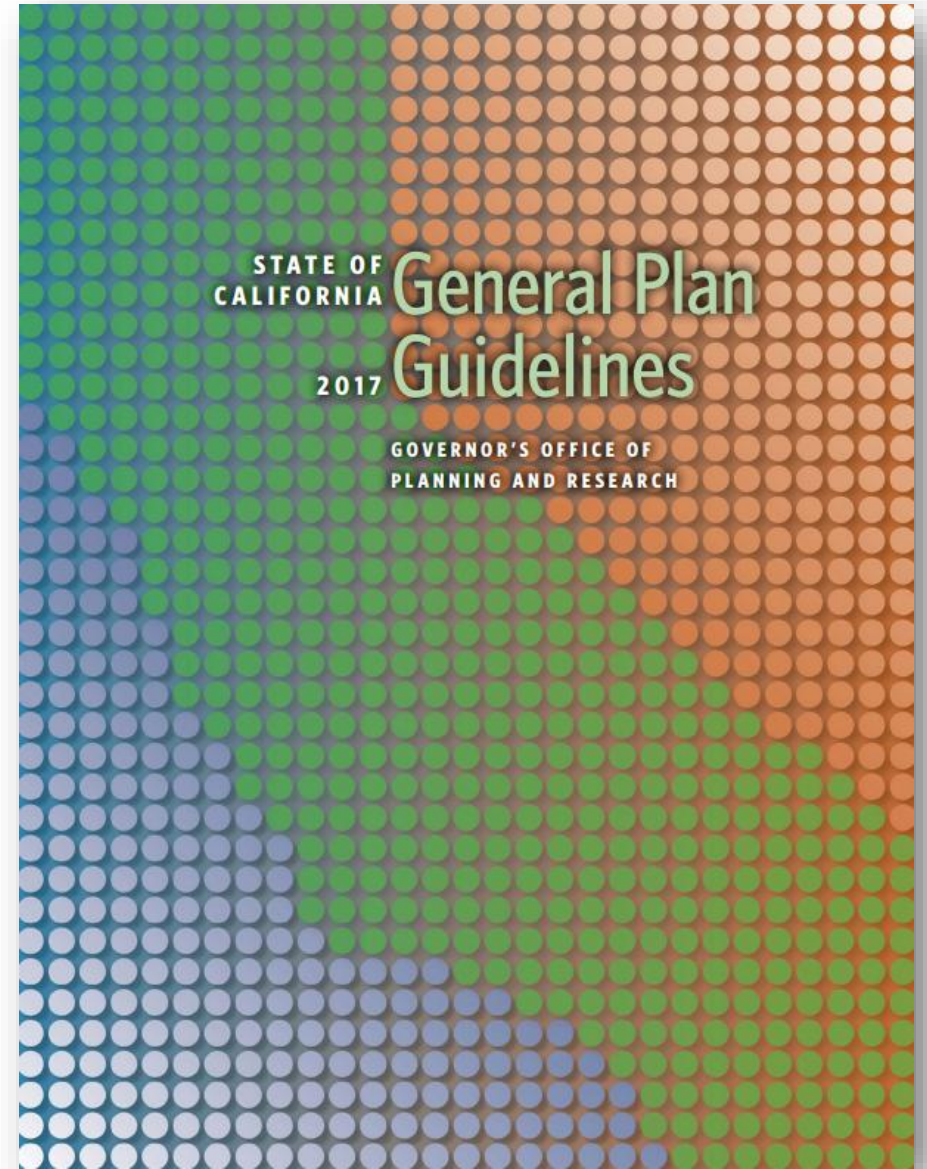
Santa Maria General Plan

Planning Commission

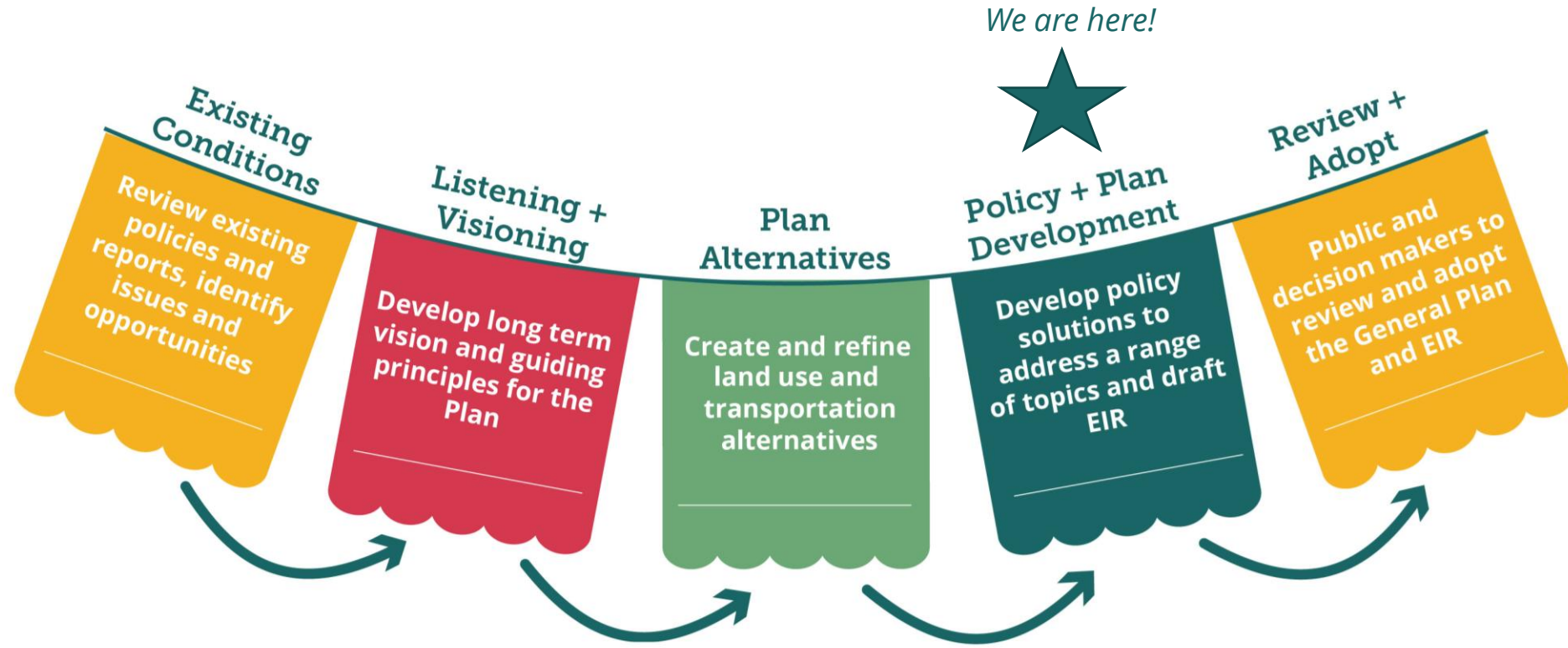
February 6, 2025

Purpose of the General Plan

- Long-term (20-30 year) City policy document to guide future decisions and actions in Santa Maria
- Reflects the community's shared vision for the future
- Preserves and enhances community strengths
- Addresses topics of concern



Planning Process

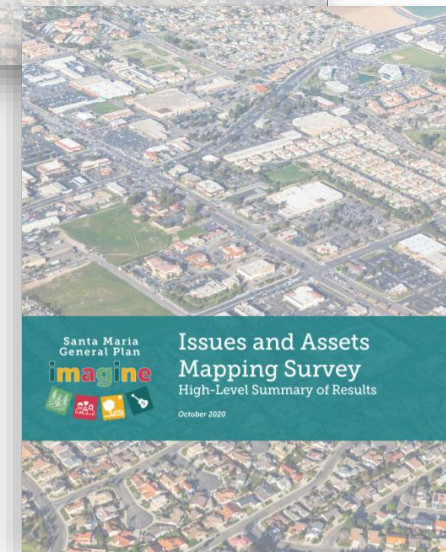


Community engagement throughout process

Please visit www.imaginesantamaria.com to learn more about the General Plan Update

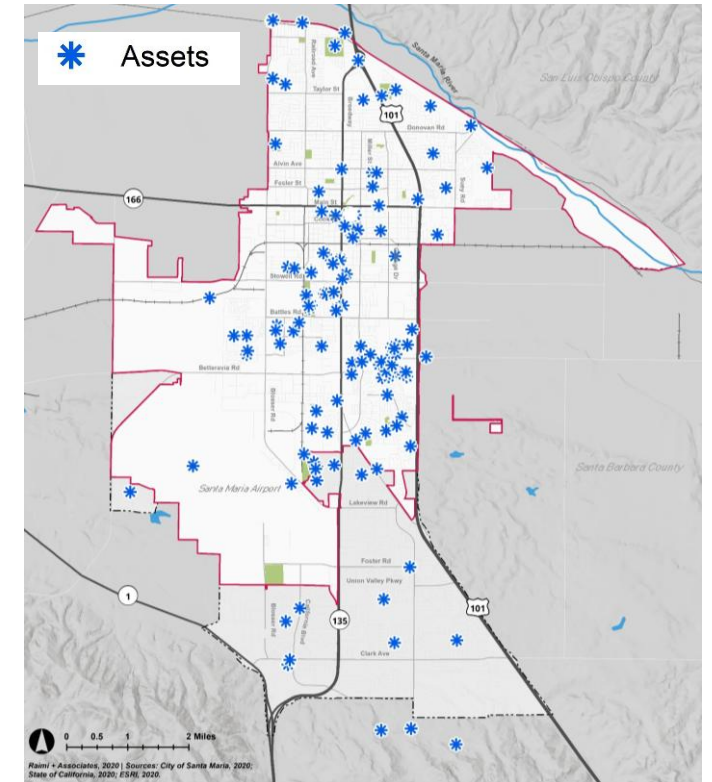
Project Milestones

- Existing Conditions Reports (2020)
- Vision, Guiding Principles, and Areas of Change and Stability
 - *Approved by City Council in 2021*
- Land Use Alternatives and Analysis (2023)
- Housing Element
 - *Adopted by City Council in late 2023*
- Preferred Land Use Alternative
 - *Approved by City Council in late 2023*
 - *Council requested studying an expanded annexation area*
- Annexation Study (*Underway*)



Community Engagement To Date

- TAC meetings (11)
- Stakeholder Interviews
- Online surveys (4)
- Community workshops (2)
- Alternatives orientation and office hours (4)
- Community cafes (SB 1000, farmworkers, safety, housing) (4)
- Housing Element engagement (survey, workshops)
- City Council (3) and Planning Commission (6) Meetings
- *Engagement activities conducted in English, Spanish, and Mixteco*



Please visit www.imaginesantamaria.com to view Community Engagement Summaries

Phase 4: Policy and Plan Development

Policy Frameworks Purpose

- Outlines the proposed policy direction for each Element of the General Plan\
- Serve as a basis of community feedback before the next step in the GPU process – the Draft General Plan



Policy Frameworks

- Conservation* and Open Space*
- Safety*
- Land Use*
- Circulation*
- Recreation and Parks
- Public Facilities and Services
- Economic Development
- Noise*
- Environmental Justice*

*State-required Element

Policy Framework Structure

Goal

- | An expression of community direction, stated as desired ends
- | in 2045

- | — → **Policy**

- | A specific statement of intent or direction that guides
- | decision-making and helps implement a goal

- | — → **Implementation Action**

A specific activity, procedure, program, or project that carries out a policy

Policy Frameworks Tentative Timeline

Pre-Policy Framework Development

Sept. – Oct.
2024

- Project team initiates work on Policy Frameworks
- Policy brainstorm meetings with City staff
- Policy brainstorm meetings with TAC and Planning Commission

Policy Framework Development

Late Fall 2024

- Project team writes Admin Draft Policy Frameworks

Public Draft Frameworks and Community Review

Early 2025

- Public Draft Policy Frameworks released
- Community review

We are here!

Policy Revisions and Draft Plan

Spring 2025

- Project team revises policy based on community feedback
- Project team writes Draft General Plan

New Policy Direction

Key Questions to Consider

- Is the new policy direction **consistent with the community's vision and guiding principles**?
- Some of the new policy direction reflects State requirements, but Santa Maria has some flexibility in how it meets those requirements. Do the new policies **accurately reflect Santa Maria's unique context, challenges, and opportunities**?
- Collaboration is required to achieve the community's goals. Does the new policy direction remain **focused on the City's jurisdiction** while at the same time **taking full advantage of resident leadership and partnerships** with other government agencies and the private sector?



Conservation and Open Space

- **New Element:** Dedicates a new General Plan Element to topics that are in the Resources Management Element of the current General Plan to better align with State requirements.
- **Multi-functional Open Space:** Develops open spaces for recreational opportunities, heat mitigation, stormwater filtration, groundwater recharge, and wildlife habitat.
- **Greenhouse Gas (GHG) Reductions:** Aligns City policy with State GHG emissions reduction goals.
- **Cultural and Tribal Resources:** Protects resources unique to the area.
- **Community-Oriented:** Integrates community engagement in conservation planning and programs and prioritizes community access to the benefits of conservation efforts.

Safety

- **Resilience:** Incorporates updated information on climate change and adaptation to satisfy State requirements, including resilience to the growing risks from extreme heat, floods, and fire.
- **Vulnerable Populations:** Emphasizes supporting populations that are particularly vulnerable to hazards and ensuring these populations are adequately equipped to respond to potential hazard events.
- **Outreach and Education:** Focuses on developing targeted outreach programs to educate the public on exposure to potential hazards and increase awareness of available programs and resources to address potential hazard risks.

Land Use

- **Complete Communities:** Focuses on creating “complete communities” in which residents have easier access to daily needs and public amenities.
- **Design and Public Realm:** Emphasizes improved design and pedestrian-friendly public spaces.
- **Land Use Compatibility:** Strengthens measures to prevent and mitigate conflicts between incompatible uses.
- **Implementation:** Identifies key implementation steps including Specific Plan and Zoning Code updates, new design guidelines, and annexation master planning.

Circulation

- **Complete Streets:** Emphasizes complete streets designed for safe and convenient travel by all modes, as required by State law.
- **Safety:** Focuses on eliminating traffic-related fatalities, reducing injury collisions, and providing safe evacuation routes in the event of an emergency, as required by State law.
- **Vehicle Miles Traveled:** Reduces vehicle miles traveled (VMT), as required by State law.

Recreation and Parks

- **New Element:** Dedicates a new General Plan Element to topics that are in the Resources Management Element of the current General Plan.
- **Expanded Access:** Emphasizes park access for underserved areas, ensuring new developments meet parkland requirements and enhance recreational opportunities citywide.
- **Sustainable Parks:** Introduces policies on water-efficient landscaping, resilient facilities, and environmentally friendly design for new and existing parks.
- **Community Partnerships:** Expands focus on collaborations with schools, nonprofits, and private entities to support park access and recreational programming.

Public Facilities and Services

- **New Element:** Dedicates a new General Plan Element to topics that are in the Resources Management Element of the current General Plan, including water, wastewater, stormwater, solid waste, police, fire, public buildings, and libraries.
- **Annexation:** Establishes clear policies for ensuring that newly annexed areas have adequate infrastructure, parks, and municipal services without neglecting existing portions of the city.
- **Proactive Growth Planning:** Calls for regular updates to municipal plans to address increased service demand from population growth and annexation.

Economic Development

- **Broad Strategies:** Prioritizes broader strategies, higher-level planning, and long-term flexibility rather than specific actions and operational details.
- **Strategic Partnerships:** Emphasizes strategic local and regional partnerships that leverage the City's proximity to key assets and prioritizes high-growth industries while maintaining agriculture as a foundational industry.
- **Tourism as an Economic Driver:** Aims to establish Santa Maria as a destination and expand the role of tourism for the city in attracting visitors, activating spaces, enhancing the quality of life for current residents, and attracting new talent.

Noise

- **Traffic Noise:** Mitigates noise impacts from traffic, particularly from the highway and industrial and agricultural uses.
- **Temporary Noise:** Minimizes temporary and construction noise and ground-borne vibration.

Environmental Justice

- **New Goals and Policies:** Adds new goals and policies to advance environmental justice and health equity in accordance with State law.
- **Pollution Exposure:** Focuses on protecting community members from pollution and improving indoor air quality.
- **Physical Activity:** Emphasizes equitable access to parks and recreation resources, active transportation infrastructure, and local transit.
- **Community Engagement:** Focuses on accessible public meetings, diversity in boards and commissions, youth leadership, community benefits agreements, and ways to involve residents in land use decisions.

Opportunities for Community Feedback

Learn More and Provide Feedback

- **Project Website** www.imaginesantamaria.com
 - Download Policy Frameworks
 - Review this presentation
 - Provide online feedback
- **Planning Commission Study Sessions**
 - February 6, 1:30pm, Shepard Hall in the Santa Maria Library
 - February 20, 1:30pm, Shepard Hall in the Santa Maria Library
- **Office Hours**
 - **On Zoom: Wed. February 19, 2025 | 1:00–2:30 p.m.**
Register here: <https://us02web.zoom.us/meeting/register/XKdVD95rQUOgywXiOYutTQ>
 - **In Person: Wed. February 26, 2025 | 1:00-2:30 p.m.**
Location: Community Development Department Conference Room
- **Provide feedback by Sunday, March 2**



Next Steps

Next Steps

Policy Frameworks Engagement

Community Review of draft Policy Frameworks

Early 2025

Write General Plan

Development of Administrative Draft General Plan and EIR
Development of Public Draft General Plan

Spring-Summer 2025

Public Draft General Plan Engagement

Public Draft General Plan released
Community Review

Fall 2025

General Plan Adoption

Review and Adopt General Plan and EIR

Winter 2025

Thank you!